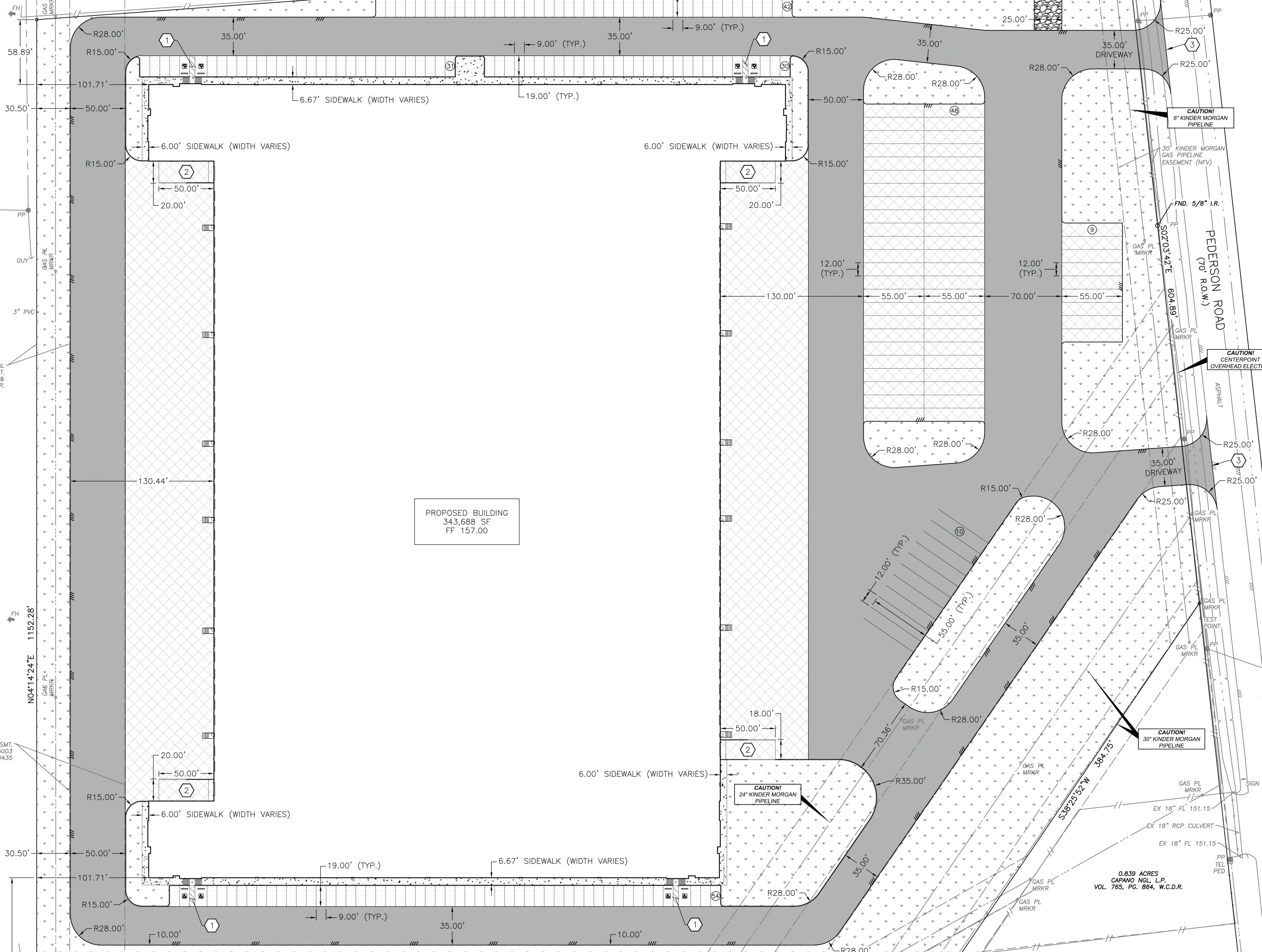


3.5 ACRE DRILL SITE  
EXXON CORPORATION  
VOL. 325, PG. 300, W.C.D.R.

CALLED 8.9861 ACRES  
KINDER II, LP  
W.C.C.F. NO. 1605947

EX 18" RCP CULVERT  
FND. 5/8" I.R.  
GAS PL MRKR

S89°53'39"E 991.44'



PROPOSED BUILDING  
343,688 SF  
FF 157.00

30" WIDE DOW CHEMICAL  
CO. PIPELINE ESMT.  
VOL. 118, PG. 636 &  
VOL. 119, PG. 337, W.C.D.R.

106.6288 ACRES  
C-2 PEDERSON WEST, LLC  
VOL. 1393, PG. 130, W.C.D.R.

50' DRAINAGE ESMT.  
W.C.C.F. NO. 505003  
W.C.C.F. NO. 1400435

N04°14'24"E  
1152.28'

19.7912 ACRES  
MEDLINE INDUSTRIES  
HOLDINGS LP  
W.C.C.F. NO. 1903506  
W.C.C.F. NO. 1908940

PROPOSED DETENTION POND

SEE SHEET C-08 FOR DETAILED  
DETENTION POND DIMENSIONS

50' TENNESSEE GAS TRANSMISSION CO. ESMT.  
(PLACED PER PHYSICAL EVIDENCE, NO  
DESCRIPTION WITHIN RECORDED INSTRUMENT)  
VOL. 94, PG. 357, W.C.D.R.

50' SHELL PIPELINE ESMT.  
VOL. 106, PG. 384, W.C.D.R.

30' CAPANO NGL SERVICES  
PIPELINE ESMT.  
VOL. 1188, PG. 300, W.C.D.R.

7.4103 ACRES  
1090 ROAD LLC  
W.C.C.F. NO. E1708257

100' TENNESSEE GAS TRANSMISSION CO. ESMT.  
VOL. 110, PG. 125, W.C.D.R.  
VOL. 130, PG. 129, W.C.D.R.  
VOL. 130, PG. 475, W.C.D.R.

7.4103 ACRES  
1090 ROAD LLC  
W.C.C.F. NO. E1708257

CAUTION!  
6" KINDER MORGAN  
PIPELINE

CAUTION!  
6" KINDER MORGAN  
PIPELINE

CAUTION!  
6" KINDER MORGAN  
PIPELINE

CAUTION!  
CENTERPOINT  
OVERHEAD ELECTRIC

CAUTION!  
30" KINDER MORGAN  
PIPELINE

CAUTION!  
30" KINDER MORGAN  
PIPELINE

CAUTION!  
30" TENNESSEE GAS TRANSMISSION CO. ESMT.  
VOL. 128, PG. 15, W.C.D.R.

CAUTION!  
30" KINDER MORGAN  
PIPELINE

CAUTION!  
30" KINDER MORGAN  
PIPELINE

CAUTION!  
30" KINDER MORGAN  
PIPELINE